

PROIMAGE REVIEW

Professional Imaging, LLC

Special Points of Interest:

- *Introducing new proprietary EMR*
- *Deciding whether rehab is the most appropriate treatment option*
- *Information and forms available at our website*

NEW EMR AND ORDER GUIDELINES

Professional Imaging is a mobile medical practice that provides dysphagia consultations including the modified barium swallow study.

The wording of “dysphagia consultation” has encompassed the following by Professional Imaging’s standard of care:

esophagram, vocal cord, c-spine, mandibular/dental, and physician evaluation.

This is the consult that we have been providing since we started. Many people have expressed that we are now doing a different evaluation due to writing the orders differently. Really the only difference with writing the orders is the WORDING that is now being used.

Professional Imaging is part of a niche field in that our type of consultation and our level of information that we provide is very specific to a certain population, the dysphagic population. This specialty service had not existed in this manner prior to about 15 years ago and it has become more sophisticated since doctors have been involved in the decision making. This is of course what happens in our mobile medical practice.

For many years SLPs have been learning about the comprehensive MBSS as ASHA has a very specific standard they have set for what that should encompass. Unfortunately, Medicare and other healthcare payers do not follow these guidelines and it takes several CPT codes to make up the full dysphagia consultation. In the future we hope to have a CPT code specifically for this procedure. Until that happens, we must be as specific as possible by listing each component of the evaluation that is requested on the order per Medicare guidelines.

So, instead of our old wording for an order reading “dysphagia consultation including the MBSS”, the orders wording now includes the specific components that constitute the comprehensive evaluation and it is our job as a medical practice to show medical necessity when we bill these codes. We have been granted permission to use a check box form as well that may make it easier for the ordering process. Just make sure you file it in your medical record after signing it and faxing it to us.

Given that many of these codes are not performed in isolation, the majority of our orders request the full evaluation because that is the level of service that each patient is expecting from our particular service. The reason our service developed is that a swallowing study done in isolation can miss the underlying cause of the dysphagia affecting the patients swallowing function. Misdiagnosis can often lead to mistreatment and in turn, poor patient outcomes.

523 N Sam Houston Pkwy E, Ste 125
Houston, Texas 77060-4011

Ph: (281)272-MBSS or (866)675-MBSS

Fax: (281)272-6281 or (877)676-MBSS



Experts In Dysphagia Consultation

Upcoming Conferences:

Houston. Saturday, June 4, 2011

Deciphering Dysphagia with Estim. Hotel location to be announced, call to reserve a seat, 1-877-675-6277. .8 ASHA CEUs. Cost \$295 if using Professional Imaging/ \$325 if you currently do not use Professional Imaging. Payment is due to reserve seating

Inside this issue:

New EMR and order guidelines	1-2
To Rehab, Or not to Rehab	2
Mbssonline.com high-lights	3

PROIMAGE REVIEW

Continued from page 1

Please see our website for further order guidelines.

We have recently implemented our new electronic medical record to make sure you can see each component that comprises the dysphagia consultation. For quicker digestion, the report is prefaced with a summary sheet for easy reading while you get used to the new format. I have also received many reports from SLPs in the facilities that the conclusion and discussion component of the physician evaluation is helpful in tying all the pertinent findings together. Consequently, this has demonstrated that using the results of this comprehensive evaluation promoted more informed decision making for patients suffering from dysphagia.



TO REHAB, OR NOT TO REHAB, THAT IS THE QUESTION:



Alan Adolph

Logistics Coordinator

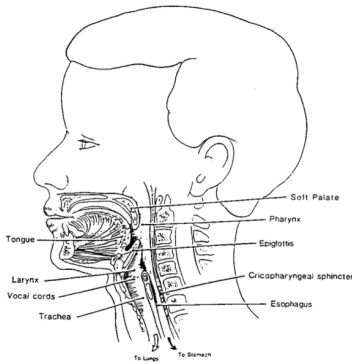
“Considering an end of life plan by the patient's family may be a much more realistic and reasonable recommendation given this particular scenario”

One of the significant changes you may see in our decision making process is to make a decision if a patient is not a rehab candidate. This would only be in a very specific situation where a patient is end stage disease process and will not benefit from therapy.

The beneficial part about being a mobile medical practice, and not just an x-ray business, is that our doctors are there as part of the consult to look at the patient's current medical and cognitive state, the diagnosis, their performance with the life sustaining mechanism of swallowing, and the prognosis in order to make some very high level recommendations.

Saying a patient is not a rehab candidate means directing resources to be utilized the best for all the patients who utilize resources and this is exactly what health-care reform is trying to achieve. Directing resources does not mean limiting care, it means providing appropriate care to people in every different, specific situation. This is commonly referred to as Population Management. For example, an end stage Alzheimer's patient who is 99 years old, tracely aspirating, and can chew just fine may not be a rehab candidate, nor a candidate for a PEG placement. Therefore, choosing mech soft and thin with small bites/sips and considering an end of life plan by the patient's family may be a much more realistic and reasonable recommendation given this particular scenario.

I also feel when families are informed that no amount of therapy or alt. nutritional means is going to extend life (and could actually make it more uncomfortable or end sooner by feeding a natural dying process) they are much more likely have their expectation be consistent with reality. This can translate into fewer instances of anger, finger pointing, guilt, and ultimately litigation. So please bear with us as we move forward by learning from the latest research about swallowing and end of life to help patients truly achieve the best quality of life no matter where they are in that process. - Piper Harris



Swallow Anatomy

MBSSONLINE.COM

There is so much useful information on our website that you may find helpful. Just a quick overview of what you can find there if you need it:

-electronic copy of our monthly newsletter (left side of home page)

-dates of upcoming conferences (left side of home page)

-electronic copy of our intake forms for scheduling (center of home page)
 facility intake, home health intake, pediatric intake

-new guidelines for our ordering procedure (center of home page)

-a notice to colleagues from our doctor to yours about our new ordering process (center of home page)

-copies of our malpractice and liability insurance certificates (center of home page)

-click downloads and scroll to videos and you can see a brief image of a normal swallow with no aspiration vs. a swallowing function with significant aspiration

[home](#) [our company](#) [faq](#) [downloads](#) [contact us](#)



Professional Imaging, LLC

Experts in Dysphagia Diagnosis and Management

Schedule Today!!

Phone: 866-675-6277
Fax: 877-676-6277

Newsletters

- [PI Review January 2011](#)
- [PI Review March 2011](#)
- [PI Review April 2011](#)

Conferences

If you are interested in attending a conference you MUST fill out the form, fax it to the office and call to follow up that it has been received and you are on the list of conference attendees. Phone 1-866-675-6277, talk with Michael or Hunt.

- **Houston. Saturday, June 4, 2011 Deciphering Dysphagia with Estim. Hotel location to be announced, call to reserve a seat, 1-866-675- 6277. .8 ASHA CEUs. Cost \$295 if using Professional Imaging/ \$325 if you currently do not use Professional Imaging. Payment is due to reserve seating.**
- [\(Click Here for further details.\)](#)

Note: If less than 5 people sign up for a conference it will be cancelled and you will be notified 2 days prior.

updated 3/18/2011

Servicing the Following Regions:

- Houston
- Austin
- San Antonio
- North East Texas
- Corpus Christi
- The Valley

Most Popular Files

- [*NEW* Intake Form \(Mar 2011\)](#)
- [*NEW* Scheduling Procedure for Facilities and Hospitals](#)
- [*NEW* Education regarding new Scheduling Procedure](#)
- [*NEW* Notice to Colleagues with Order Guidelines](#)
- [*NEW* Pediatric Scheduling Form \(Mar 2011\)](#)
- [*NEW* Home Health Scheduling Form \(Mar 2011\)](#)
- [Malpractice Insurance Binder](#)
- [Umbrella Liability Policy](#)



KIT - Professional Imaging's Newest Mobile Clinic (2008)

On behalf of Professional Imaging LLC, I would like to thank you for your visit to our site.

If you are new to Professional Imaging and are visiting us to learn more about our services, I invite you to our [frequently asked questions](#) where I am sure many of your questions will be answered. Also, please visit the the general [downloads](#) page for downloadable documents and forms that are printable for your convenience as well as videos that may be viewed after a short download.

© 2011 Professional Imaging, LLC | Phone: 866-675-6277 | Fax: 877-676-6277